

GM643 SLIDING WARDROBE

metalia[®]
FURNITURE



3*18 SCREW
66 PCS



ALYAN
1 PCS



6,3*50 SCREW
36 PCS



ALYAN STOPPER
24 PCS



DOWEL
2 PCS



HANGER FLANGE
6 PCS



MINIFIX SHAFT
4 PCS



SHELF PIN
8 PCS



MINIFIX HEAD
4 PCS



NAIL
55 PCS

SLIDE RAIL
2 PCS



4*22 SCREW
4 PCS

SLIDING WHEEL
12 PCS



WHEN INSTALLING THE SLIDING COVERS, PLACE THE UPPER WHEELS OF THE INNER COVER, THEN THE LOWER WHEELS OF THE EXTERNAL COVER TO THE MECHANISM.



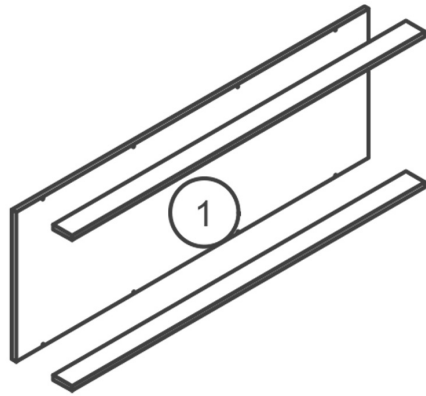
STRICTLY INSTALL THE PRODUCT BY PLATING IT ON THE FLOOR.



PLEASE SEE THE BACK OF THE PAPER TO REVIEW THE INSTALLATION DIAGRAM.

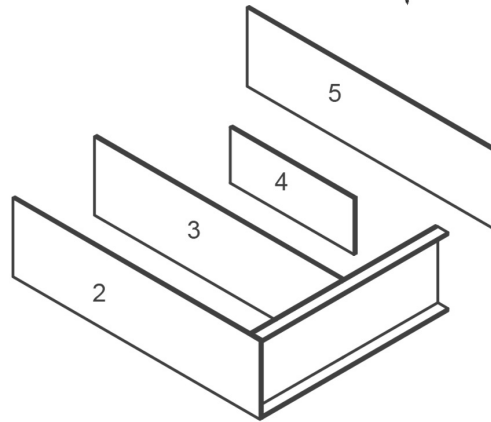


1. STEP



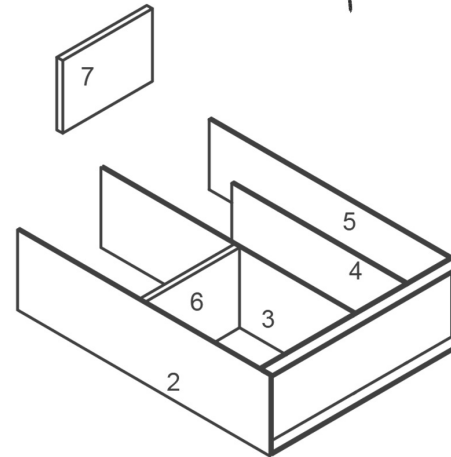
Mount the bed base to the bottom plate number 1 with the help of an allen.

2. STEP



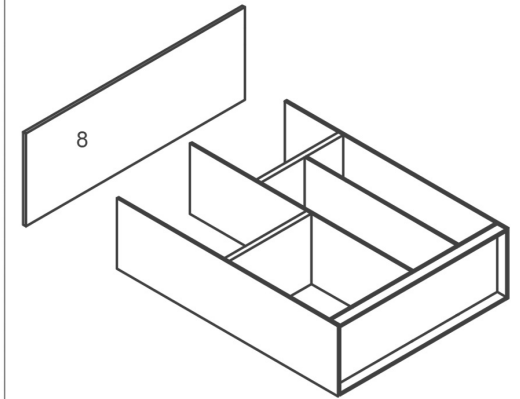
Mount the 2, 3, 4 and 5 struts to the bottom plate 1 with the help of an allen.

3. STEP



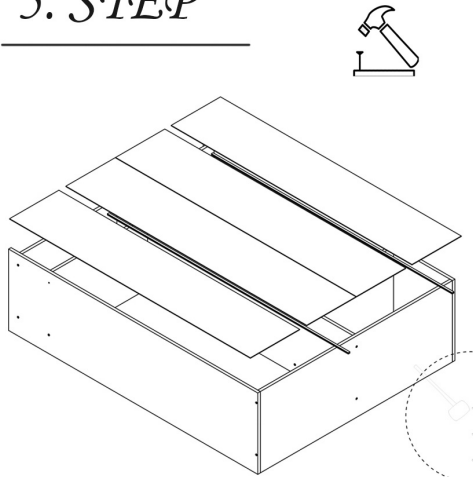
Assemble the shelf number 6, the side plate numbered 2 and 3, with the help of an allen as shown in the figure. And then mount the 7th shelf between the 3rd and 5th trays so that it is on the 4th base.

4. STEP



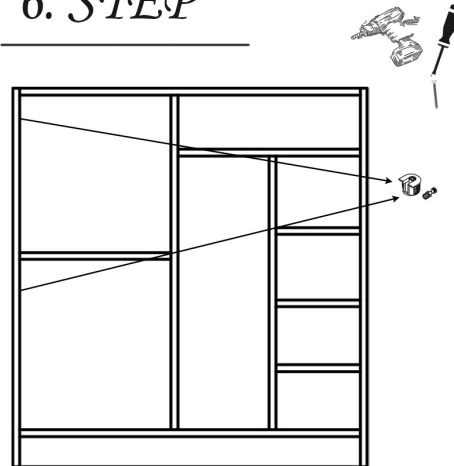
Assemble the 8 numbered top plate with the help of Italian as shown in the figure.

5. STEP



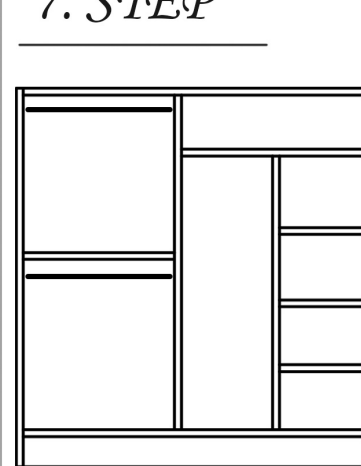
Let's turn the cabinet carefully so that it lies face down. Then let's nail the backing with the help of nails and hammer.

6. STEP



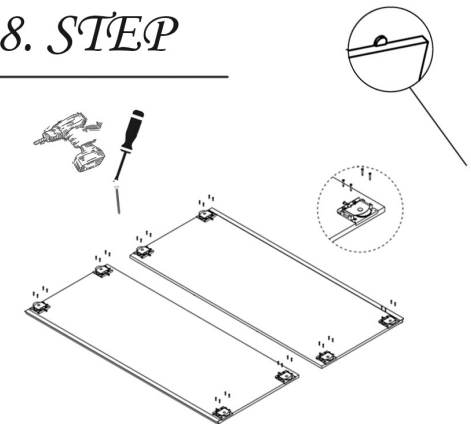
Mount the hanger flange in certain places.

7. STEP



Install the hanger pipes.

8. STEP



Assemble the lower and upper wheels of the sliding covers as in the figure. And then, when attaching the covers, first place the inner cover and then the outer cover on the mechanism with the upper wheels of priority.